



Open2Test Test Automation Framework Implementation Guide for TestPartner

Version 1.0

September 2009

DISCLAIMER

Verbatim copying and distribution of this entire article is permitted worldwide, without royalty, in any medium, provided this notice is preserved.

TABLE OF CONTENTS

1. PURPOSE OF THE DOCUMENT	3
2. FRAMEWORK IMPLEMENTATION IN TESTPARTNER	4
2.1. Object Map	4
2.2. Keyword Reference Document	4
2.3. Active Data	5
2.4. Call to Framework	8
2.5. Implementation of Framework	9
2.6. Test Results for a Keyword-Driven Script	12
3. REFERENCES	14

1. Purpose of the Document

This document provides an overview of the prerequisites and settings required to implement the keyword-driven framework in MicroFocus TestPartner.

2. Framework Implementation in TestPartner

The kKeyword-driven framework is an application-independent framework that performs all possible actions and verifications on an object. Hence, the code for the same object can be used across different applications.

In the keyword-driven approach, the entire script is developed with keywords. The script is developed in a spreadsheet that is interpreted by the main driver script, which then uses the function library to execute the complete script.

2.1. Object Map

TestPartner can create an Object Map entry for an object the first time the object is identified. There is no need to pre-define objects for TestPartner to interact with prior to recording. TestPartner determines if and how Object Map entries are recorded based on the Object Map settings in the Record Attach Name options.

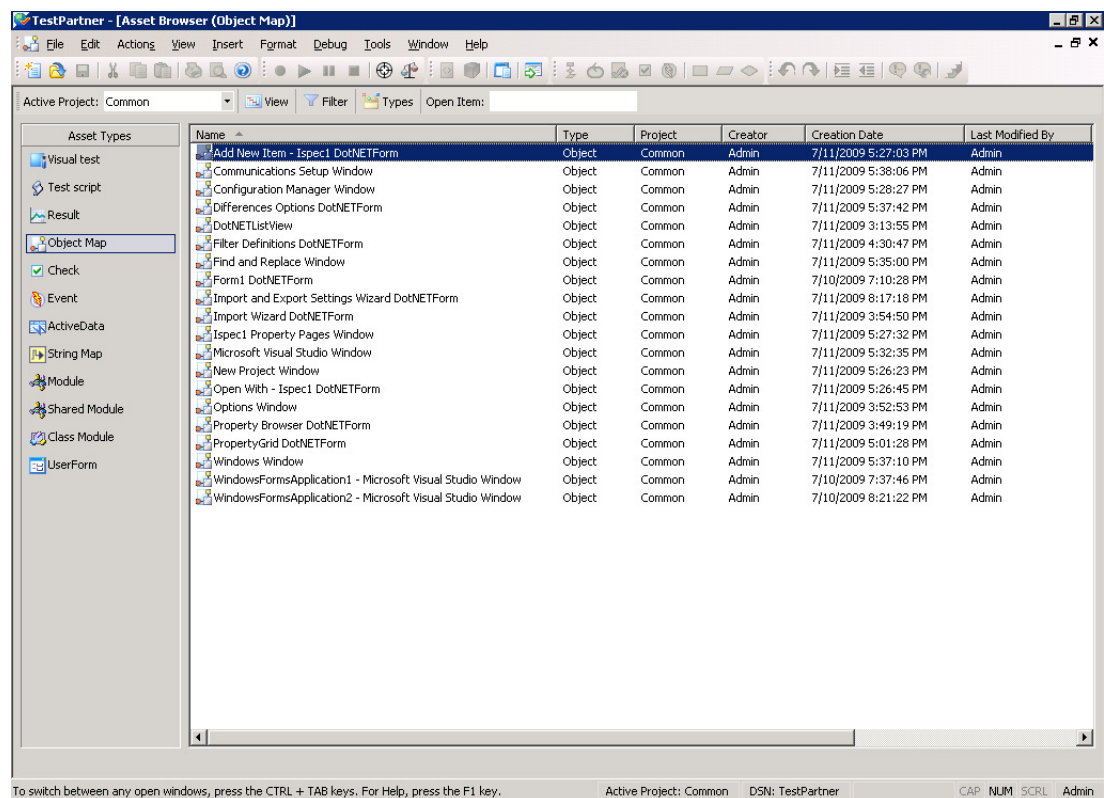
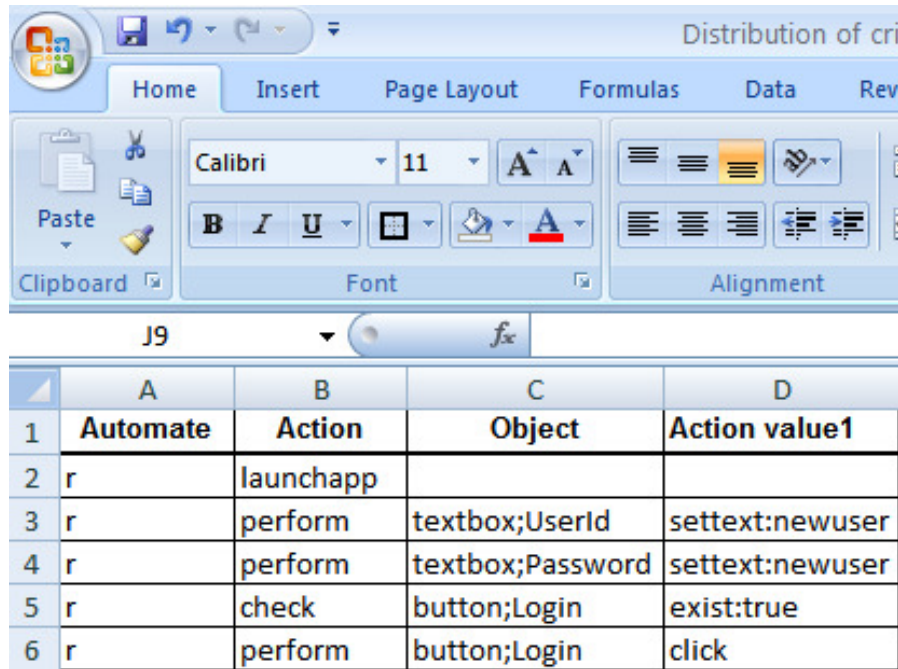


Figure 1: Object Map

2.2. Keyword Reference Document

The Key Word Reference Document (KRD) will be used as a standard reference for scripting purposes. The scripting will be done for all actions and verifications using the KRD.



	A	B	C	D
1	Automate	Action	Object	Action value1
2	r	launchapp		
3	r	perform	textbox;UserId	settext:newuser
4	r	perform	textbox;Password	settext:newuser
5	r	checkbox	button;Login	exist:true
6	r	perform	button;Login	click

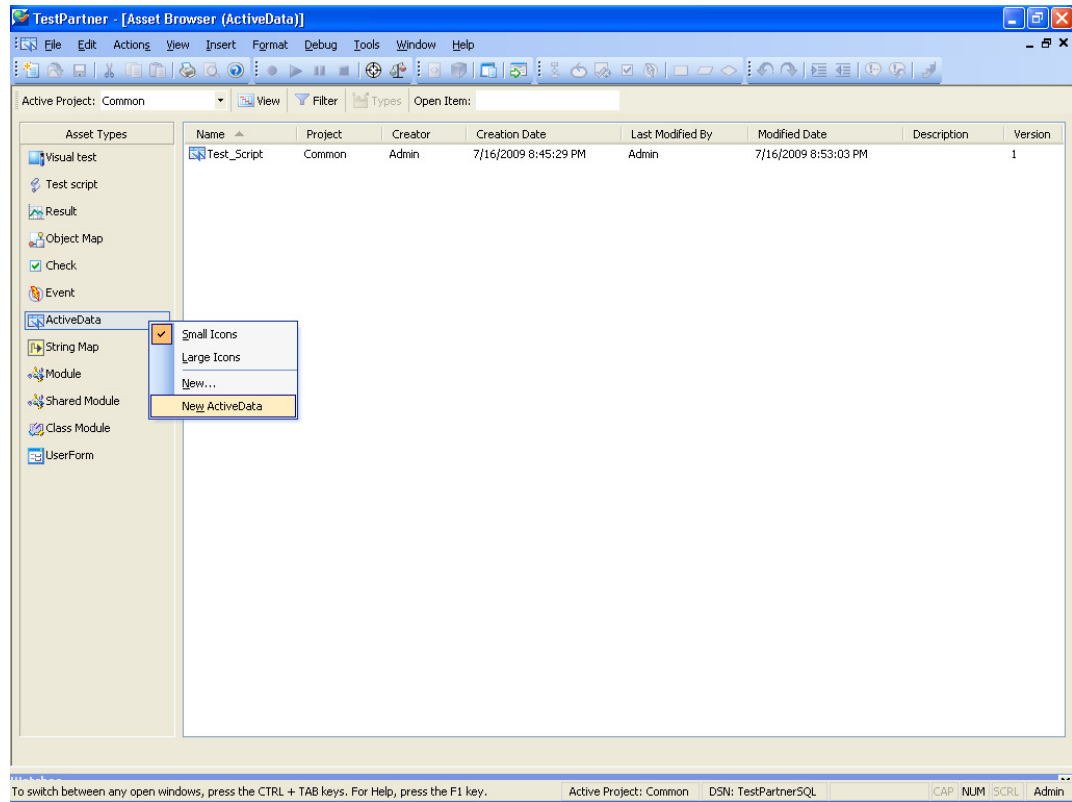
Figure 2: Sample Script

2.3. Active Data

The script, which is written in a spreadsheet, has to be loaded into the Active Data.

Following are the steps to load the Excel sheet into the Active Data:

1. Right Click on ActiveData -> New ActiveData



2. Click on Browse button and browse to the path where the spreadsheet is placed.

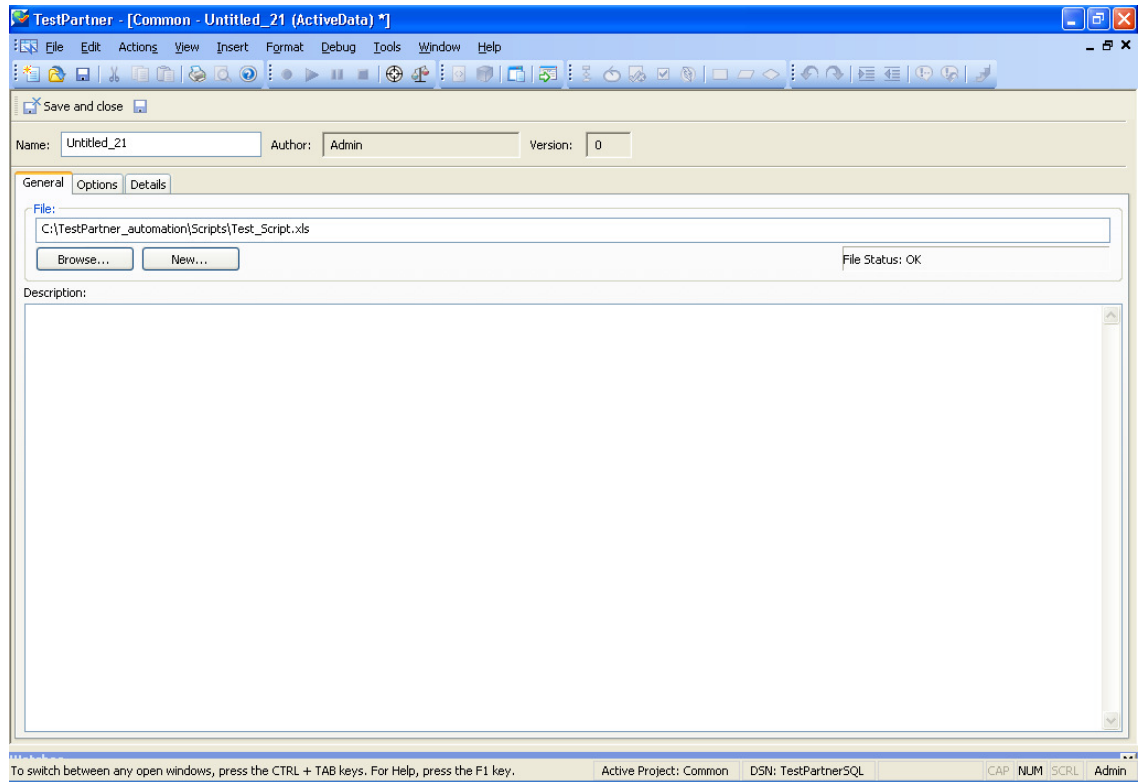


Figure 3: Loading the Script in Active Data

3. Select the Options tab and check Use First row as the header check box to use the First Row as the header.
4. Enter the Script Name in the Name field, click on the Save button, then click on the Close button.

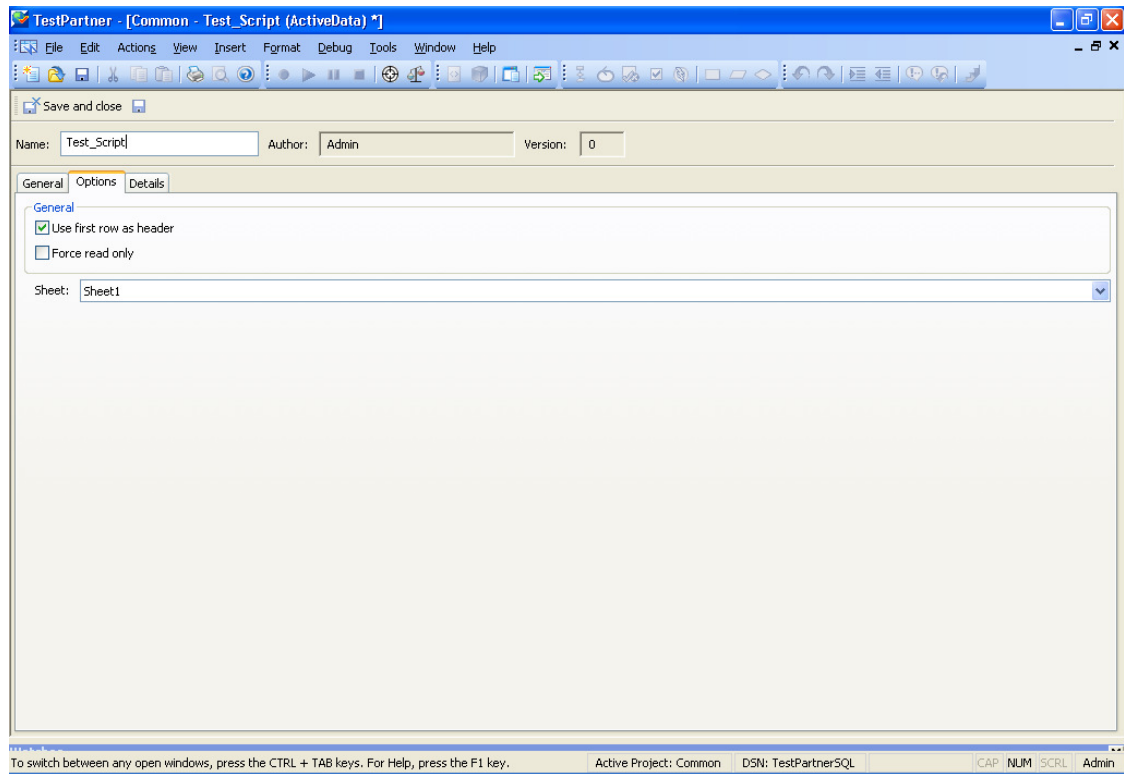


Figure 4: Setting Options in Active Data

2.4. Call to Framework

The call to `Keyword_Driver()` needs to be specified in the test script as shown below. This will call the framework file associated with the test and perform the actions by interpreting the keywords specified in the spreadsheet.

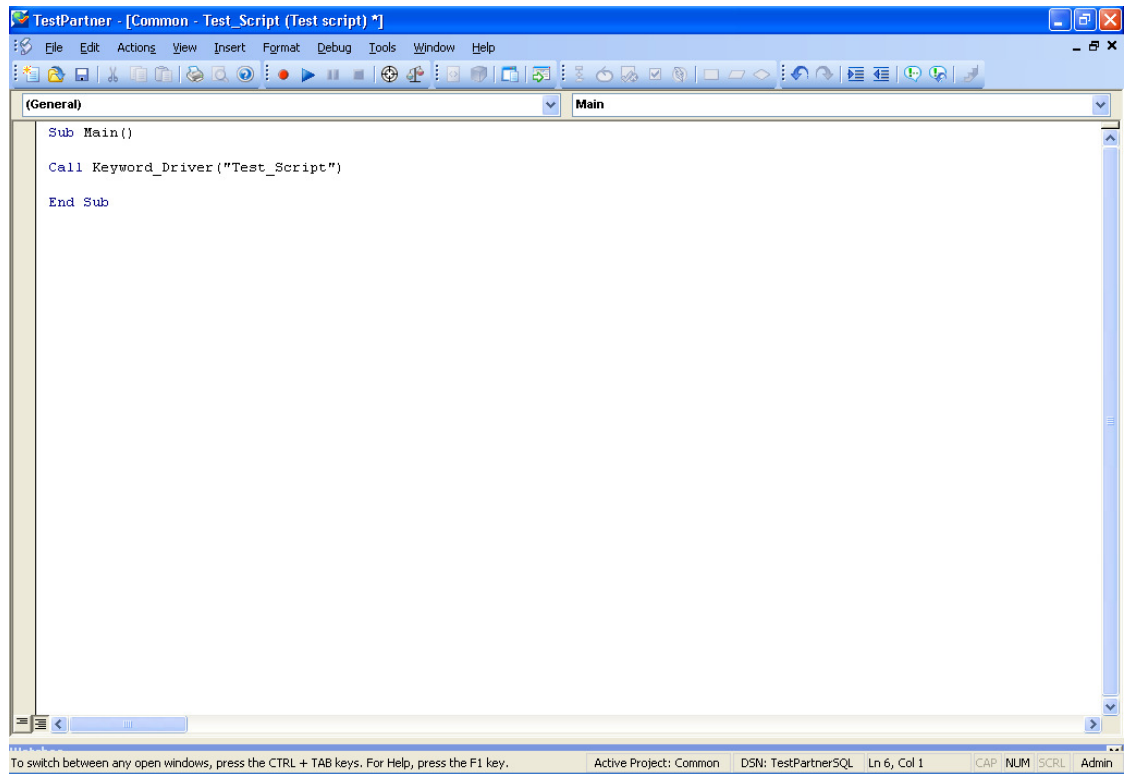


Figure 1: Call to Framework

2.5. Implementation of Framework

In TestPartner, the framework is placed in the shared module. A new shared module is created by right clicking on the Shared Module icon in Asset Browser and selecting New Shared Module. The Framework code will then be copied and can be saved.

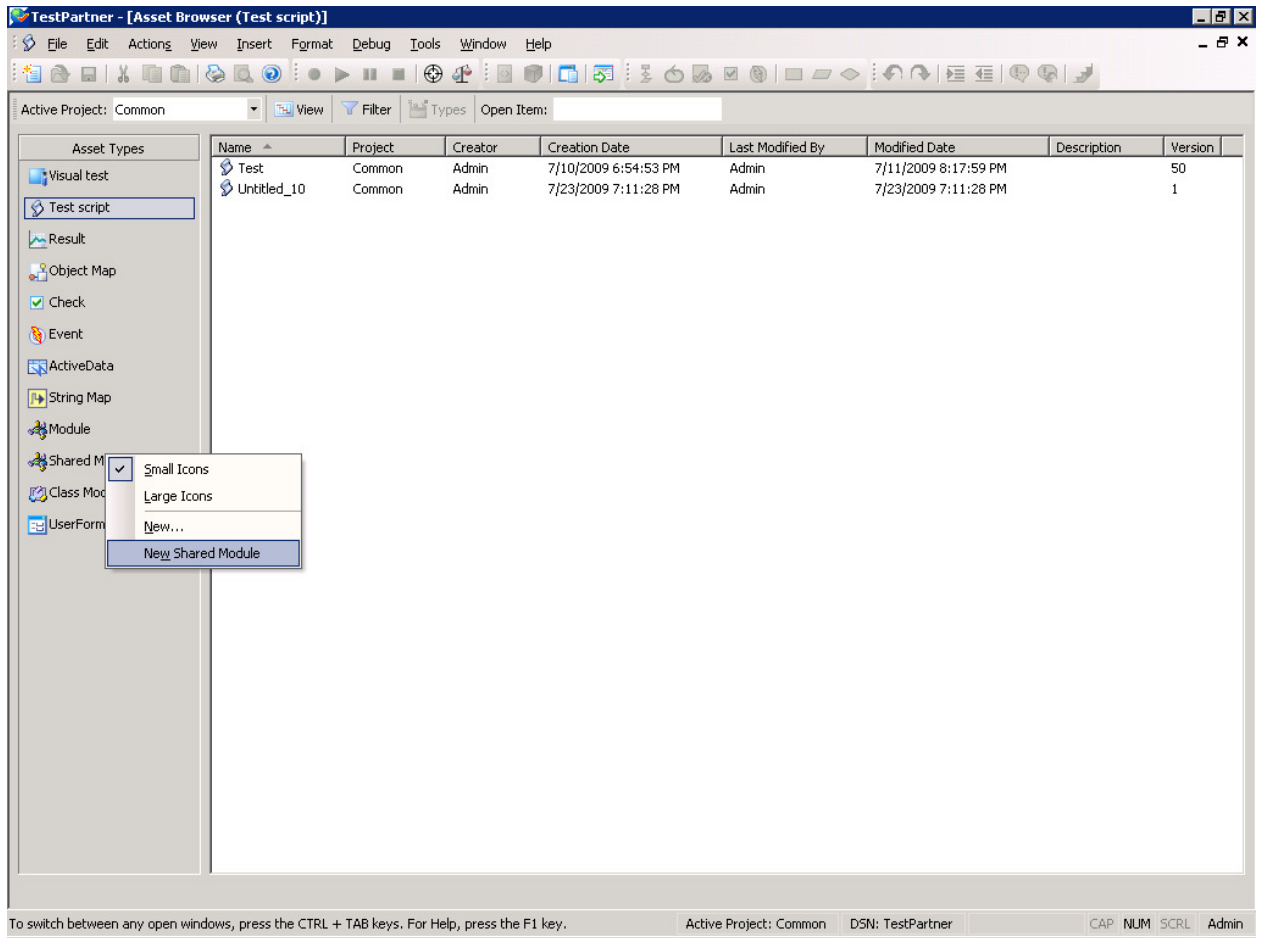


Figure 6: Creating New Shared Module

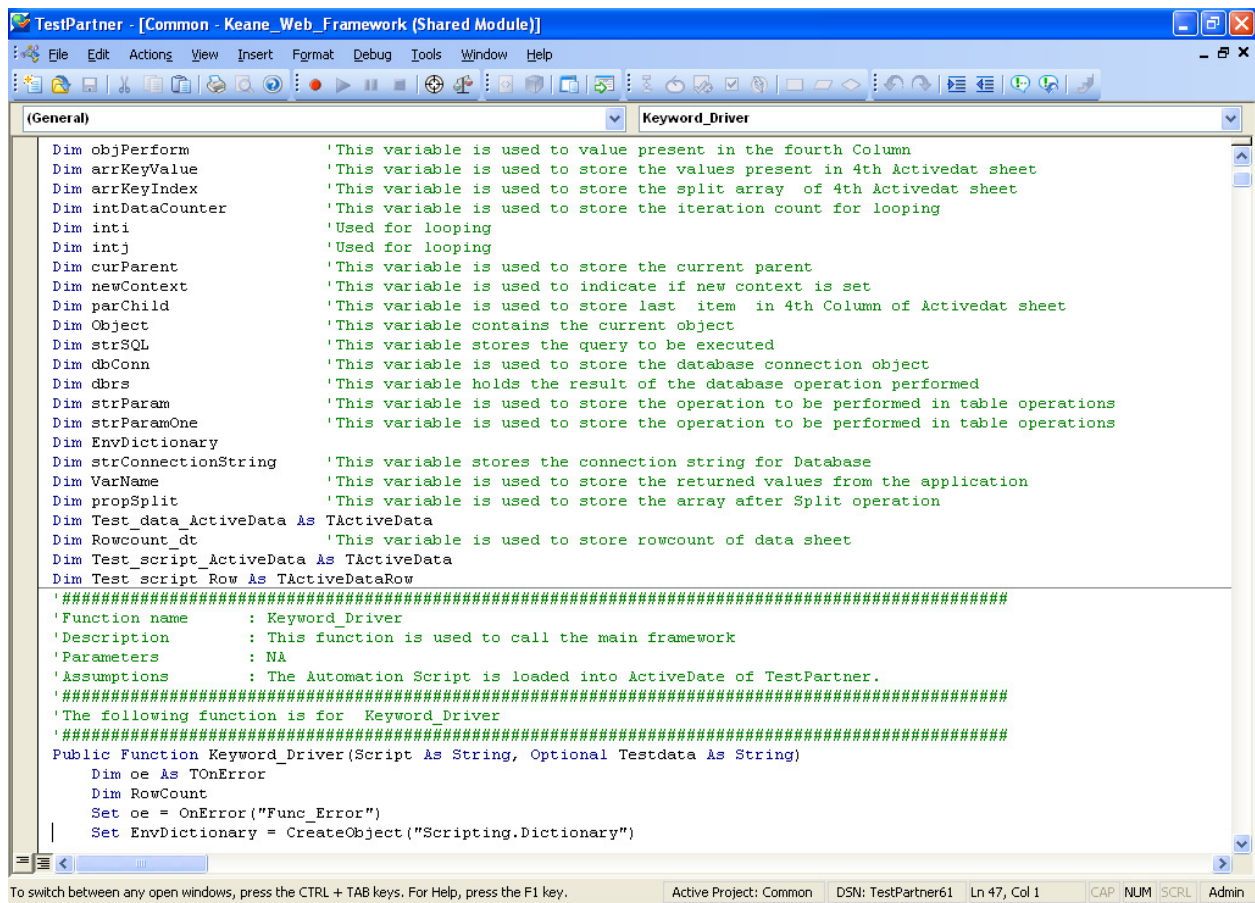


Figure 7: Creating New Shared Module

Open 'Reference' window, which is present under Tools~Reference, and add the following reference to the shared module:

1. Microsoft XML Version 2.0
2. Microsoft ActiveX Data Objects 2.0 or above

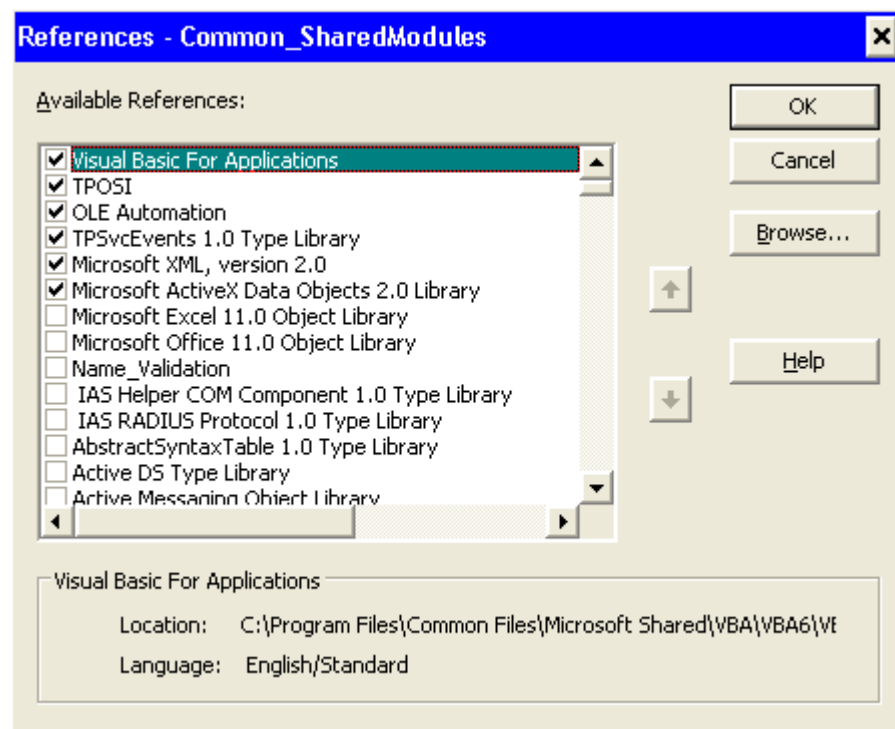


Figure 8: Creating New Shared Module

The Commonfunctions and the Userdefined functions also should be placed in the shared module by creating a new shared Mmodule as shown in the above figure.

2.6. Test Results for a Keyword-Driven Script

Test execution results can be viewed and analyzed as soon as the run session ends. To verify the test results, choose Results and Double click on the Result of a particular script. The results window will be displayed. Click on the Details tab to verify each step.

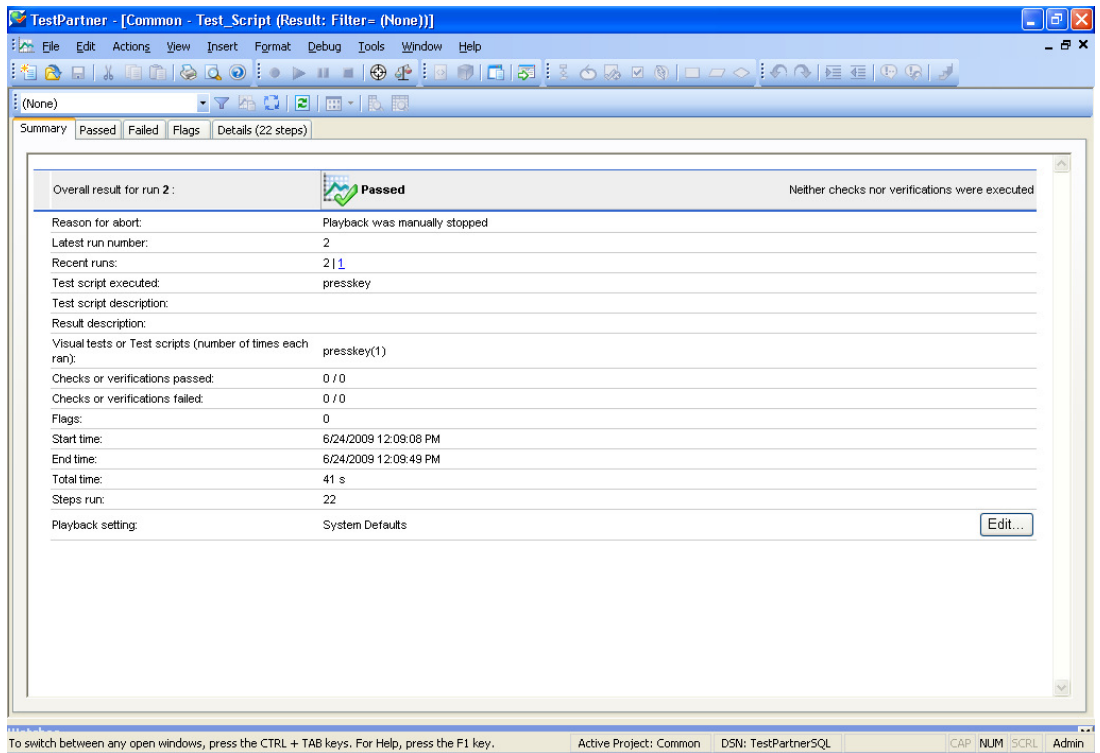


Figure 7.7: Results in Test Partner

3. References

MicroFocus TestPartner Help documentation

COPYRIGHT

This library is free software; you can redistribute it and/or modify it under the terms of the GNU Library General Public License as published by the Free Software Foundation; either version 2 of the License, or (at your option) any later version.

This library is distributed in the hope that it will be useful, but WITHOUT ANY WARRANTY; without even the implied warranty of MERCHANTABILITY or FITNESS FOR A PARTICULAR PURPOSE. See the GNU Library General Public License for more details.